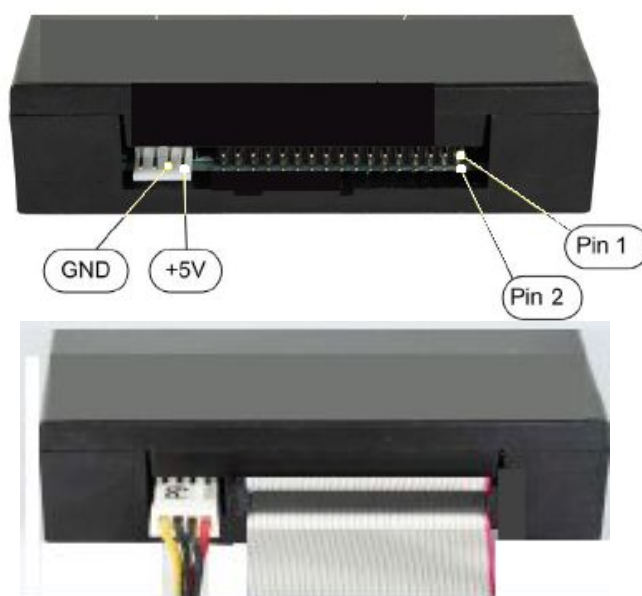


## NETWORK USER MANUAL

### Floppy emulator Network configuration

- HARDWARE INSTALLATION

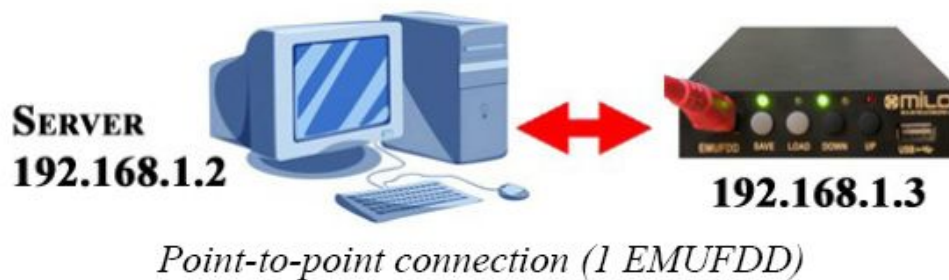
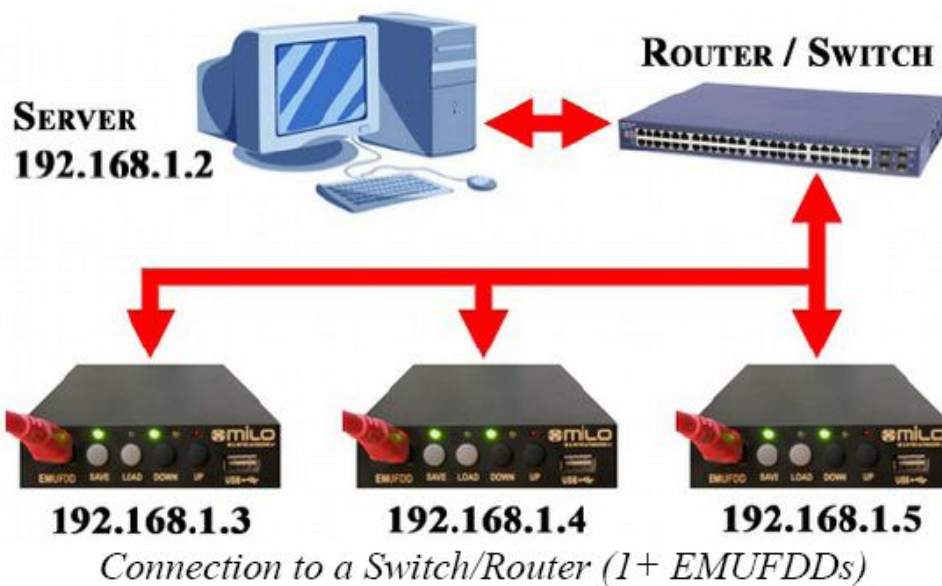


**Connect the equipment as shown, pin 1 of the flat is colored blue or red. Power supply usually 4-wire, 5 V must be connected as in photography**

NETWORK USER MANUAL



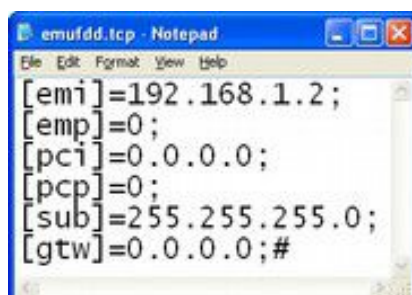
● types of connection



## NETWORK USER MANUAL

- To start

EMUFDD needs to be configured with an IPv4 address, the local network submask and, in case you're using a router, the router/gateway address. The configuration is loaded into the EMUFDD using a "**emufdd.tcp**" text file, on a USB key. Plug the USB key in, press LOAD and wait until the device will auto-reset (all leds blink very fast);

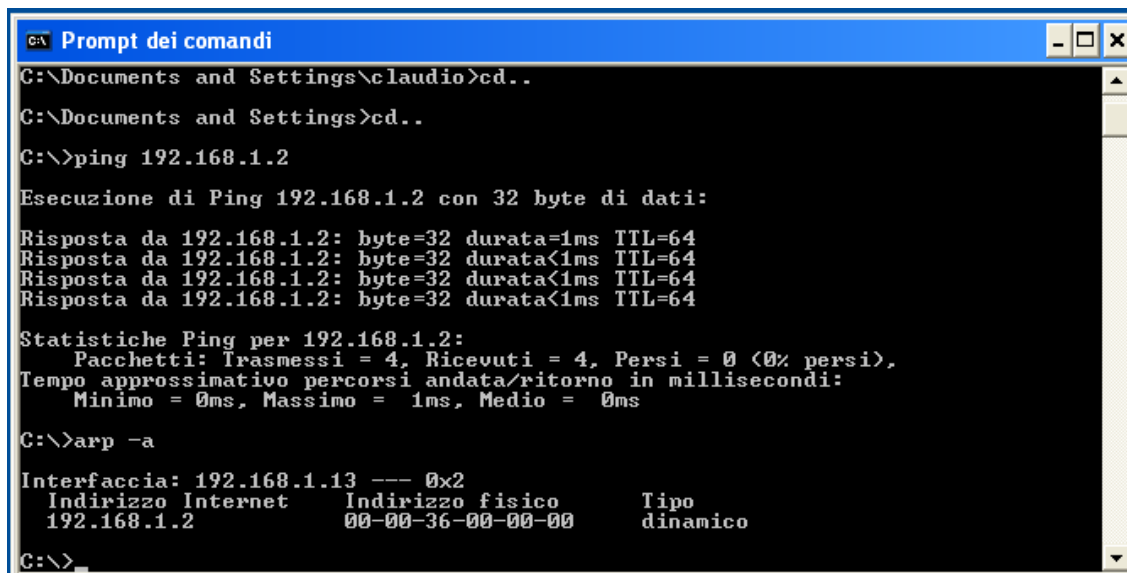


```
emufdd.tcp - Notepad
File Edit Format View Help
[emi]=192.168.1.2;
[emp]=0;
[pci]=0.0.0.0;
[pcp]=0;
[sub]=255.255.255.0;
[gtw]=0.0.0.0;#
```

[emi]	IPv4 address of EMUFDD
[emp]	Port of EMUFDD (0=1024 default)
[pci]	(Reserved for advanced custom features)
[pcp]	(Reserved for advanced custom features)
[sub]	IPv4 subnet network mask
[gtw]	IPv4 address network gateway
#	End of configuration file

## NETWORK USER MANUAL

EMUFDD can be reconfigured how many times you need and you're completely free to change the local network at any time. To check that the EMUFDD is correctly configured you can use the standard "ping" (check IP address) and "arp" (check MAC address) DOS commands;



```
CA Prompt dei comandi
C:\Documents and Settings\claudio>cd..
C:\Documents and Settings>cd..
C:\>ping 192.168.1.2

Esecuzione di Ping 192.168.1.2 con 32 byte di dati:

Risposta da 192.168.1.2: byte=32 durata=1ms TTL=64
Risposta da 192.168.1.2: byte=32 durata<1ms TTL=64
Risposta da 192.168.1.2: byte=32 durata<1ms TTL=64
Risposta da 192.168.1.2: byte=32 durata<1ms TTL=64

Statistiche Ping per 192.168.1.2:
    Pacchetti: Trasmessi = 4, Ricevuti = 4, Persi = 0 (0% persi),
Tempo approssimativo percorsi andata/ritorno in millisecondi:
    Minimo = 0ms, Massimo = 1ms, Medio = 0ms

C:\>arp -a

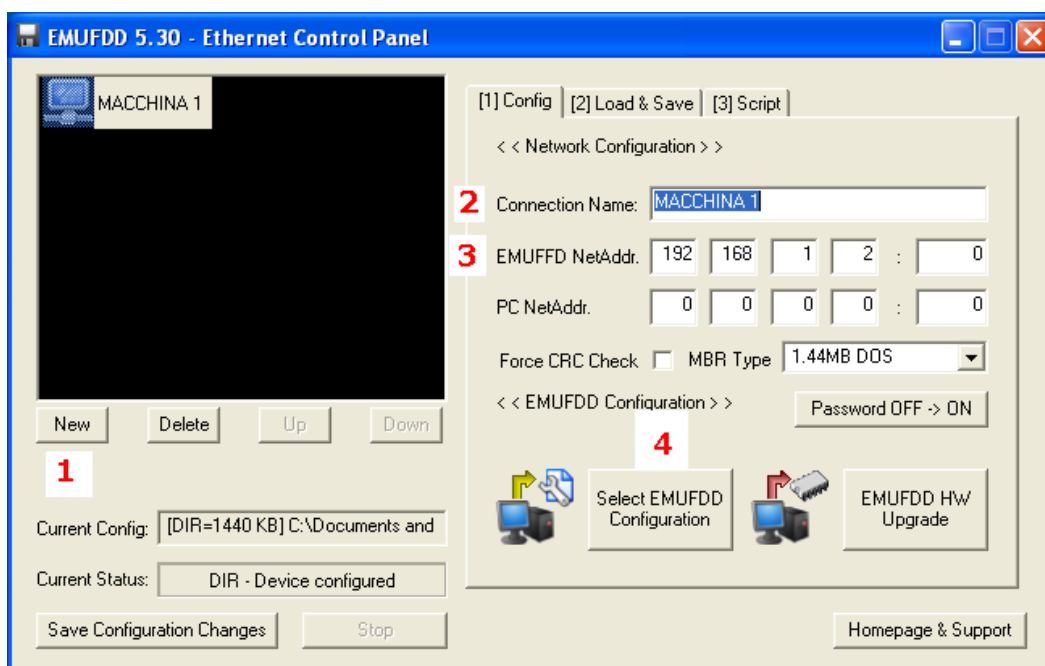
Interfaccia: 192.168.1.13 --- 0x2
    Indirizzo Internet      Indirizzo fisico      Tipo
    192.168.1.2             00-00-36-00-00-00    dinamico

C:\>
```

1. check IP address            C:\>ping 192.168.1.2 (address IP EMUFDD )
2. check MAC address C:\>arp -a  
**this will test the connection between PC and EMUFDD**

## NETWORK USER MANUAL

The software is completely portable, doesn't need any installation and can run in user mode. All your settings will be saved in a "emufdd.ini" file **(don't delete it!);**



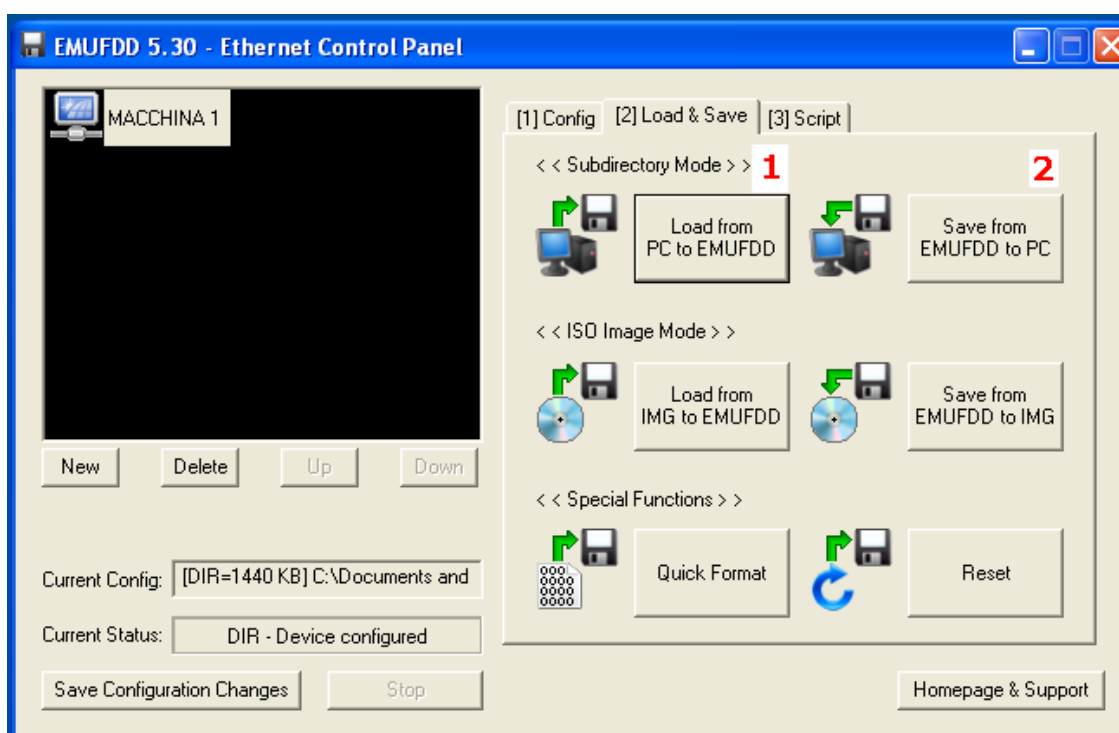
### Folder " (1) Config "

- 1 Select New
- 2 Connection name (**write the name of the machine**)
- 3 Putting the 'IP address **EMUFDD that must match the one entered in the file emufdd.tcp in the [emi] previously loaded on the emulator**
- 4 **is a configuration file of the emulator that is shipped to the customer via email or USB key is on, the file is called "emufdd.cfg" allows you to configure the 'emulator based on the floppy drive and the size of the floppy. If the configuration is correct in the Current Setup window is written as an example in the figure, he works directors to 1.44M.**

## NETWORK USER MANUAL

N.B. finished the configuration, the program creates a file emufdd.ini desktop where data is saved configuration emulator or the various emulators this file should not be deleted. You deleted if you have to repeat the configuration.

Using the " EmufddEthPanel.exe " tu transfer and save



### Folder " (2) Load & Save"

- 1 Transfer files from PC to EMUFDD files must be contained in a directory on your PC**
- 2 Save the files to a PC EMUFDD files will be saved to a directory of your PC**

**L 'EMUFDD, although it is in the network version, can save and / or save on a USB stick using a single directory EMUFDD00 that is automatically generated at the first rescue operation.**